

MOR2



MOR2.1 distal ventral right edge. 2 measurements on different residues

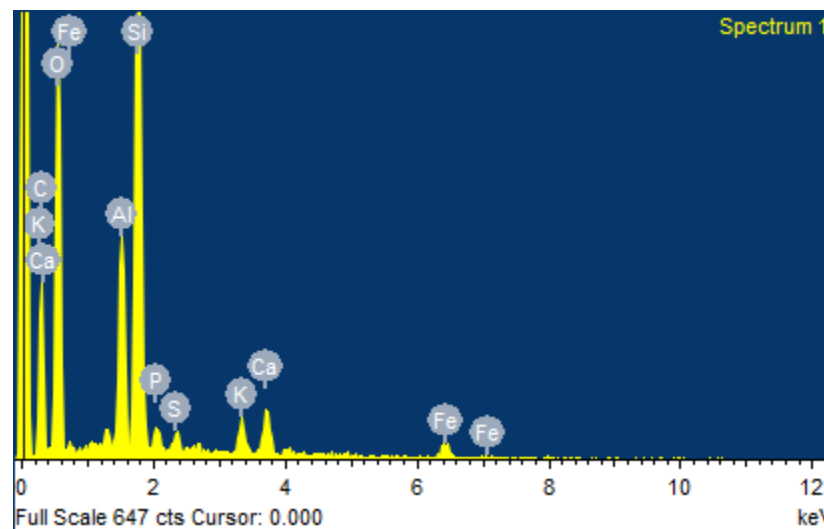
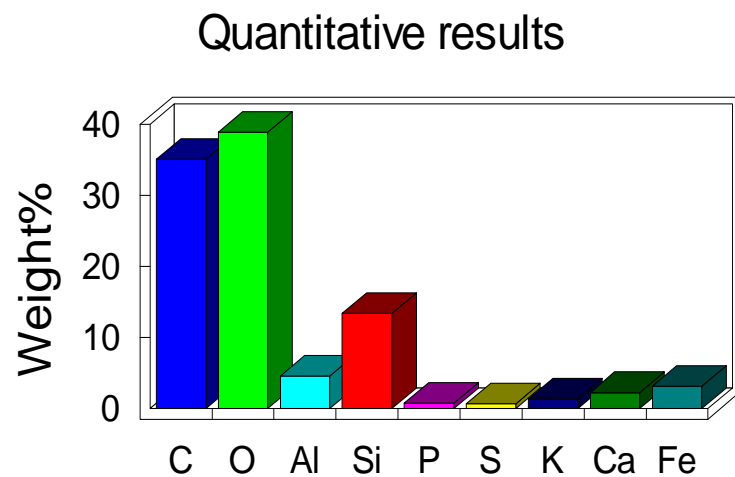
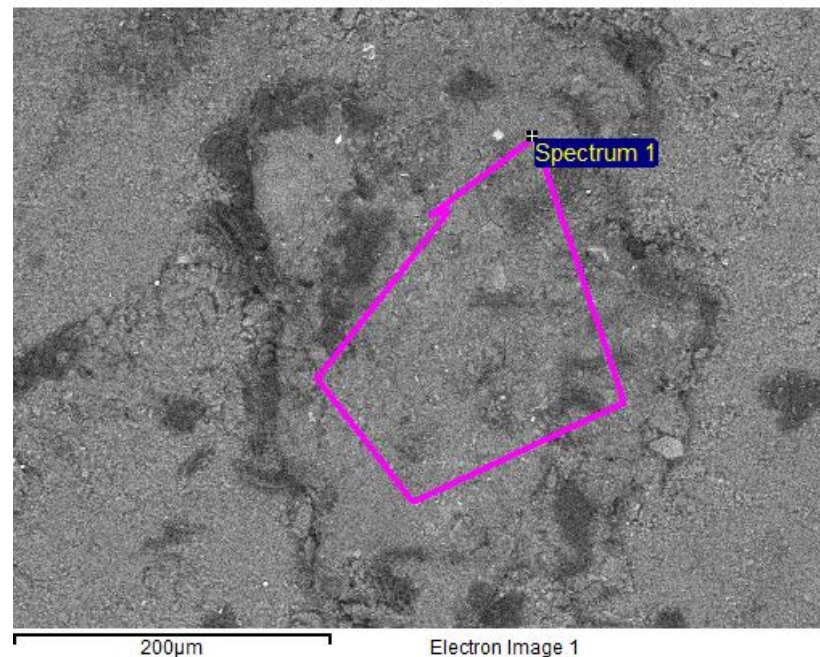
MOR2.2 rock substrate

MOR2.3 proximal ventral left edge. 1 measurement

Sample: MOR2.1

Type: Default

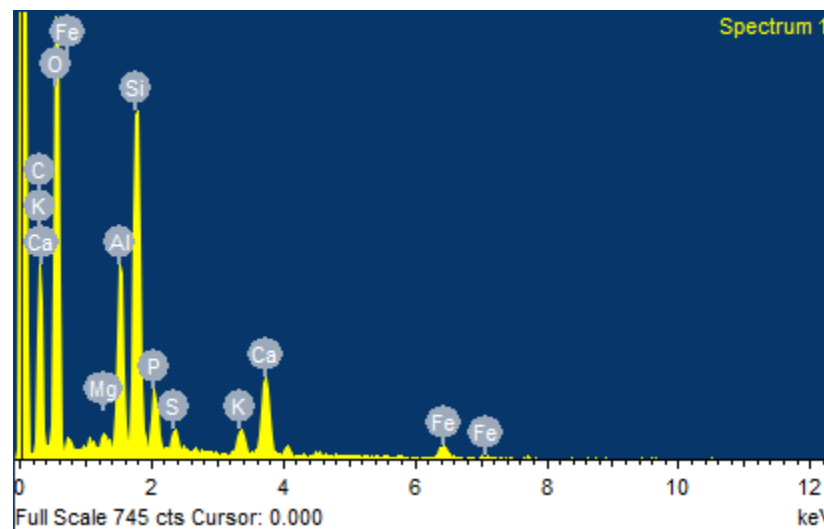
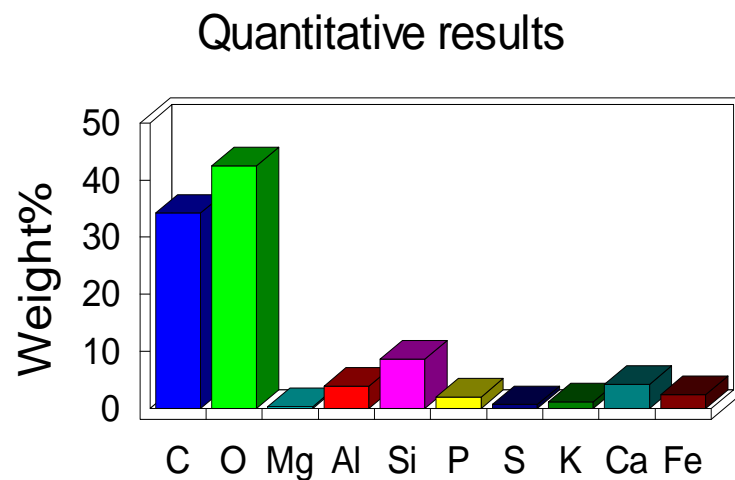
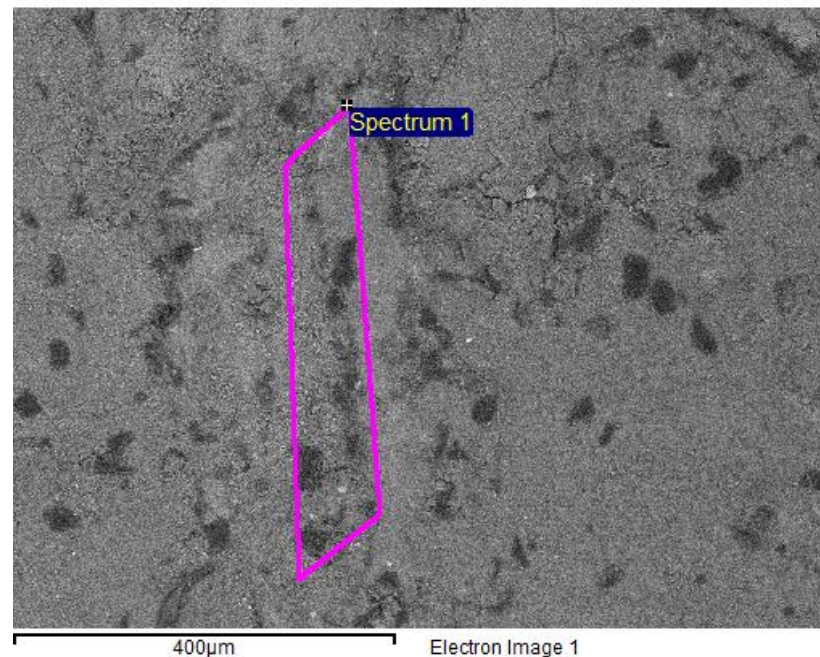
Element	Weight%	Atomic%	
C K	35.11	47.21	
O K	38.95	39.32	
Al K	4.54	2.72	
Si K	13.39	7.70	
P K	0.77	0.40	
S K	0.62	0.31	
K K	1.34	0.55	
Ca K	2.22	0.89	
Fe K	3.08	0.89	
Totals	100.00		



Sample: MOR2.1

Type: Default

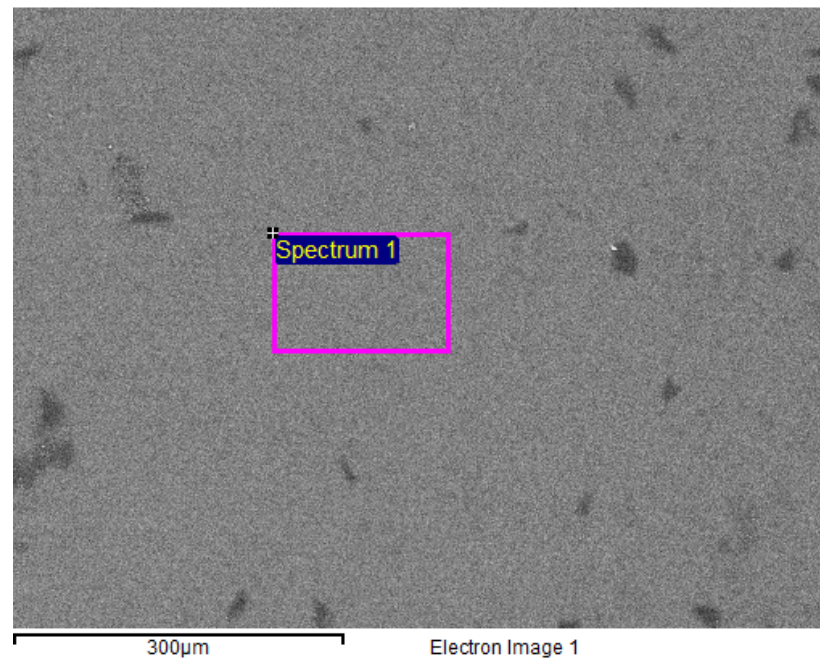
Element	Weight%	Atomic%	
C K	34.23	45.71	
O K	42.53	42.63	
Mg K	0.32	0.21	
Al K	3.89	2.31	
Si K	8.65	4.94	
P K	1.96	1.02	
S K	0.67	0.33	
K K	1.13	0.46	
Ca K	4.23	1.69	
Fe K	2.40	0.69	
Totals	100.00		



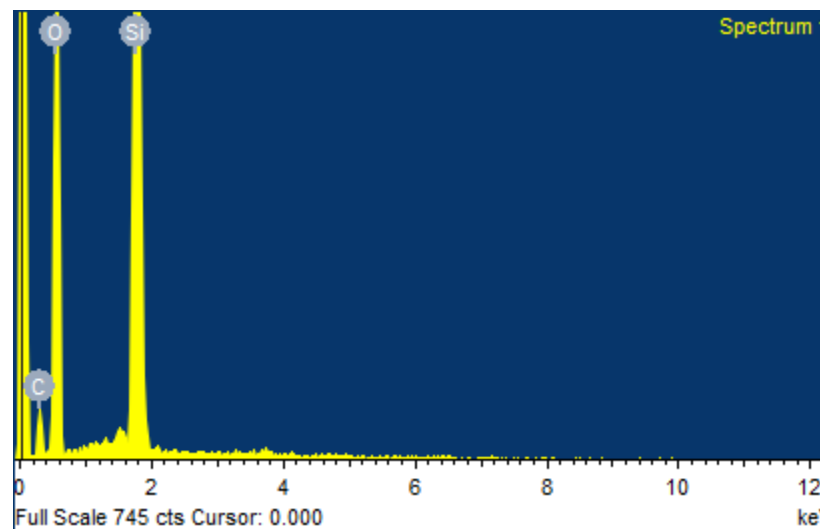
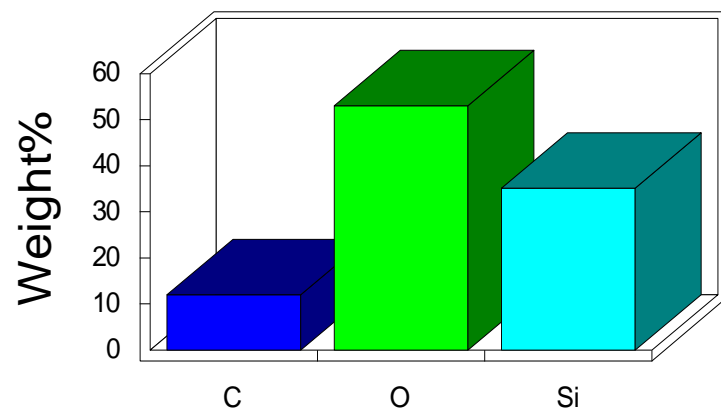
Sample: MOR2.2

Type: Default

Element	Weight%	Atomic%	
C K	11.94	17.90	
O K	53.00	59.63	
Si K	35.06	22.47	
Totals	100.00		



Quantitative results



Sample: MOR2.3

Type: Default

Element	Weight%	Atomic%	
C K	48.46	57.87	
O K	41.01	36.77	
Al K	0.51	0.27	
Si K	9.56	4.88	
S K	0.46	0.21	
Totals	100.00		

