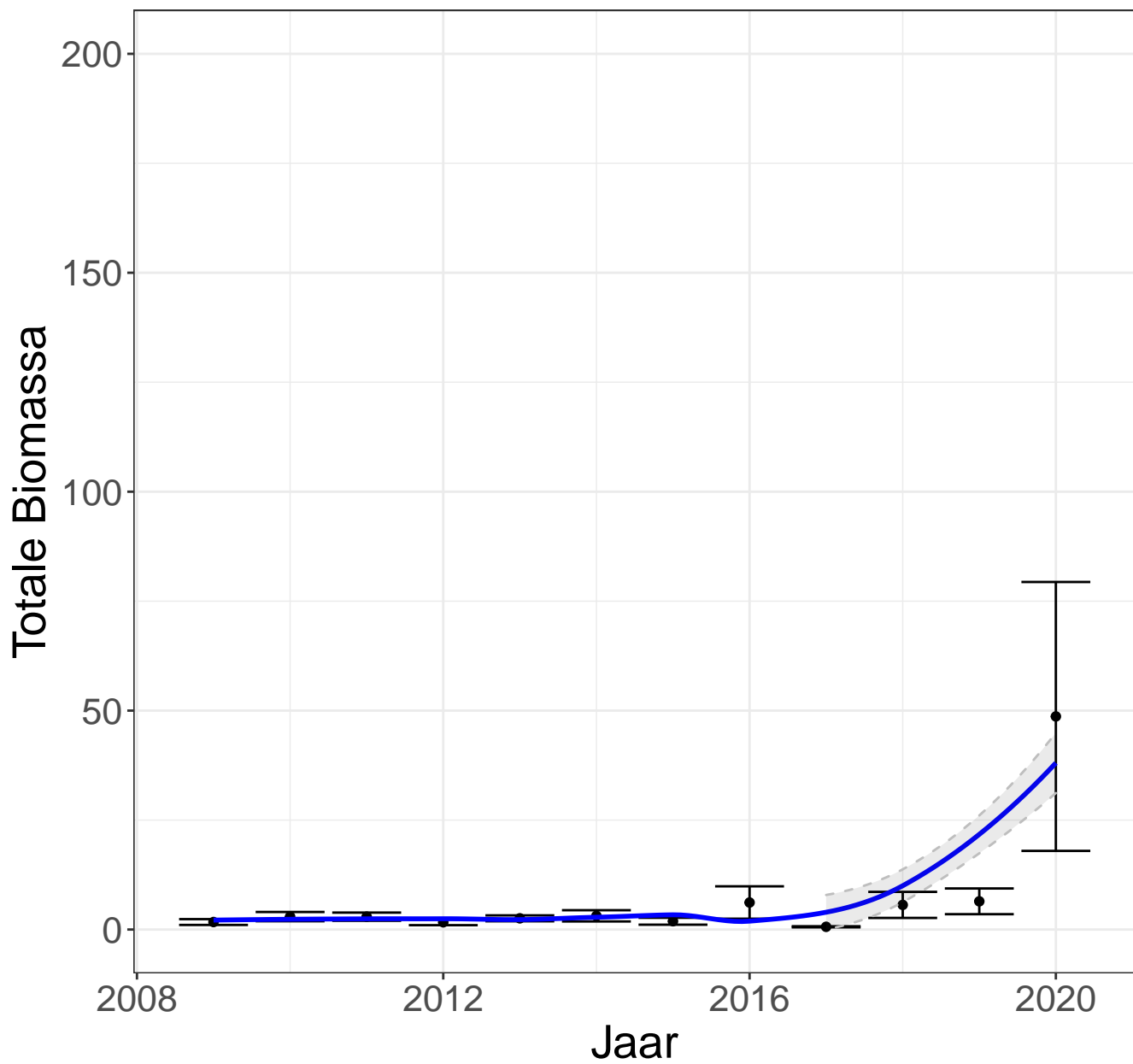
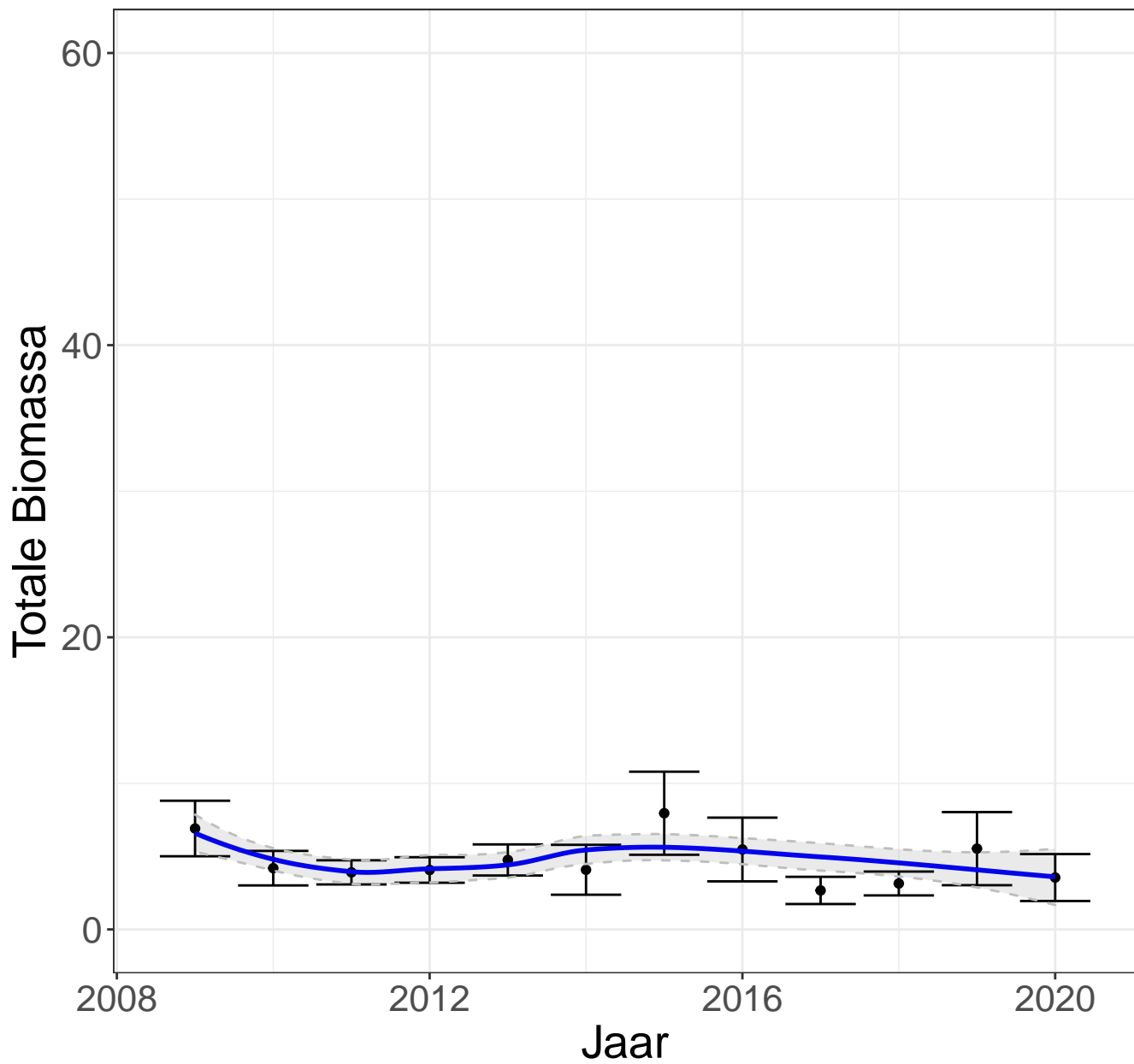


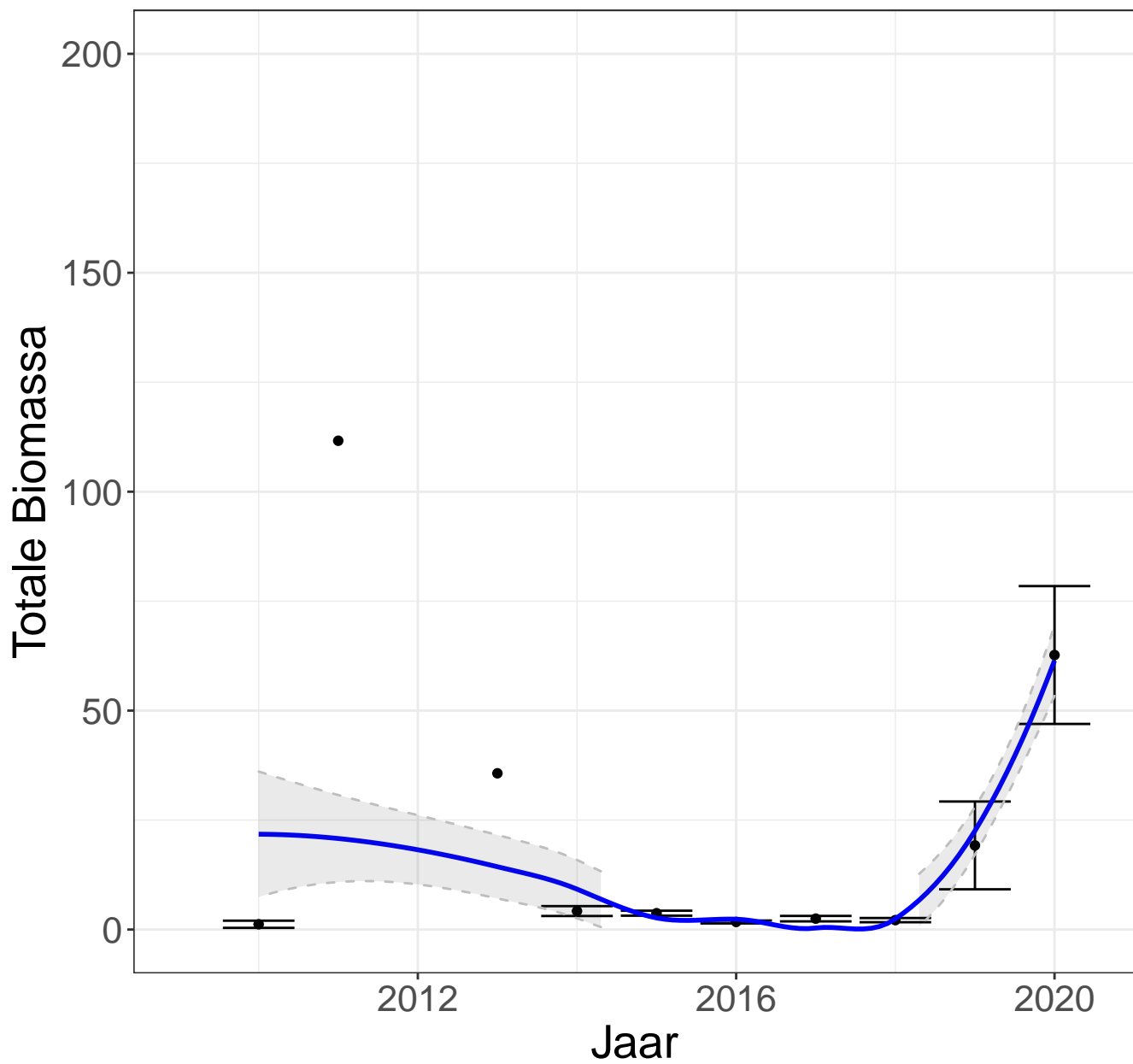
brak Hoogdynamisch sublitoraal



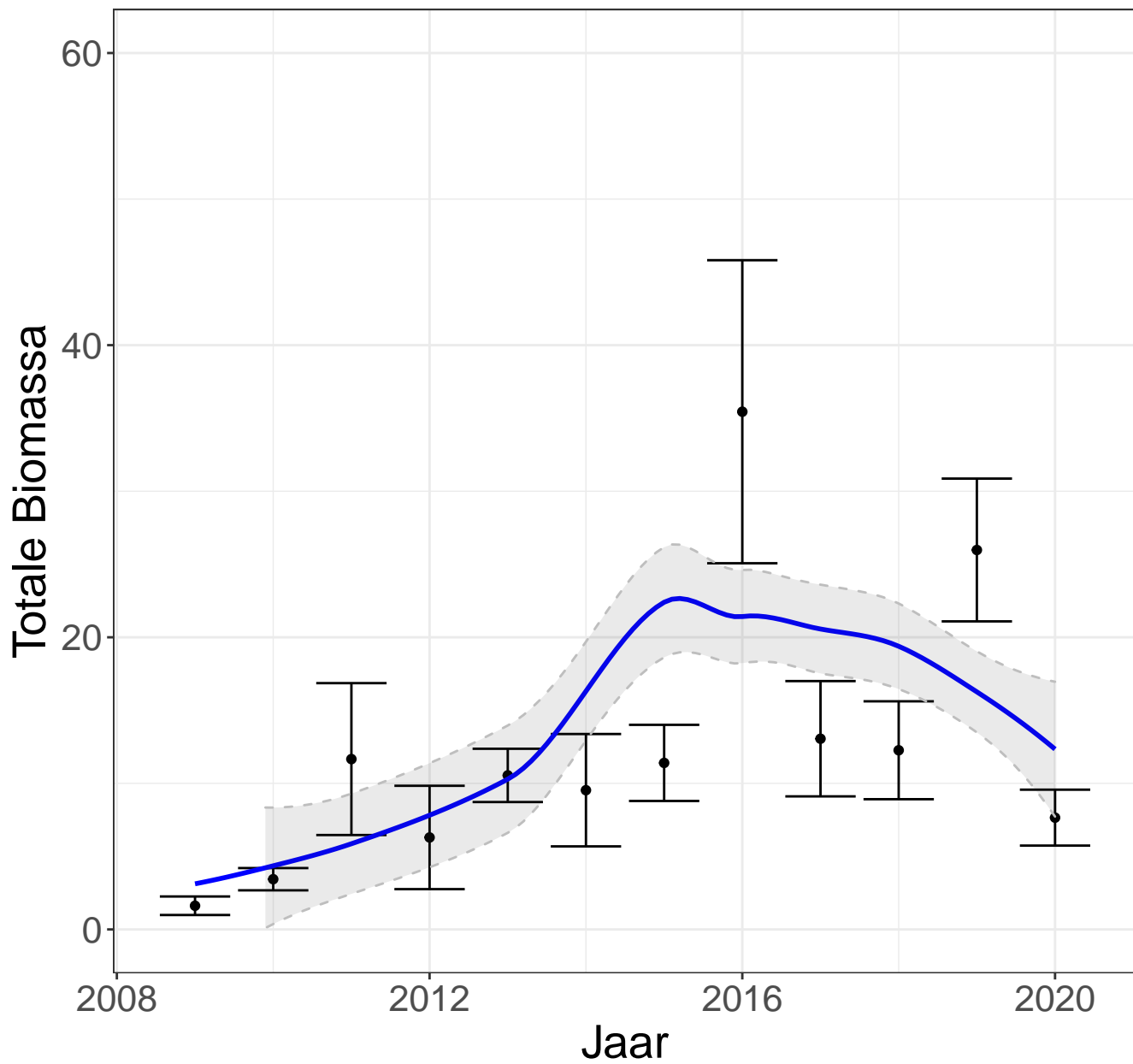
brak Hoogdynamisch litoraal



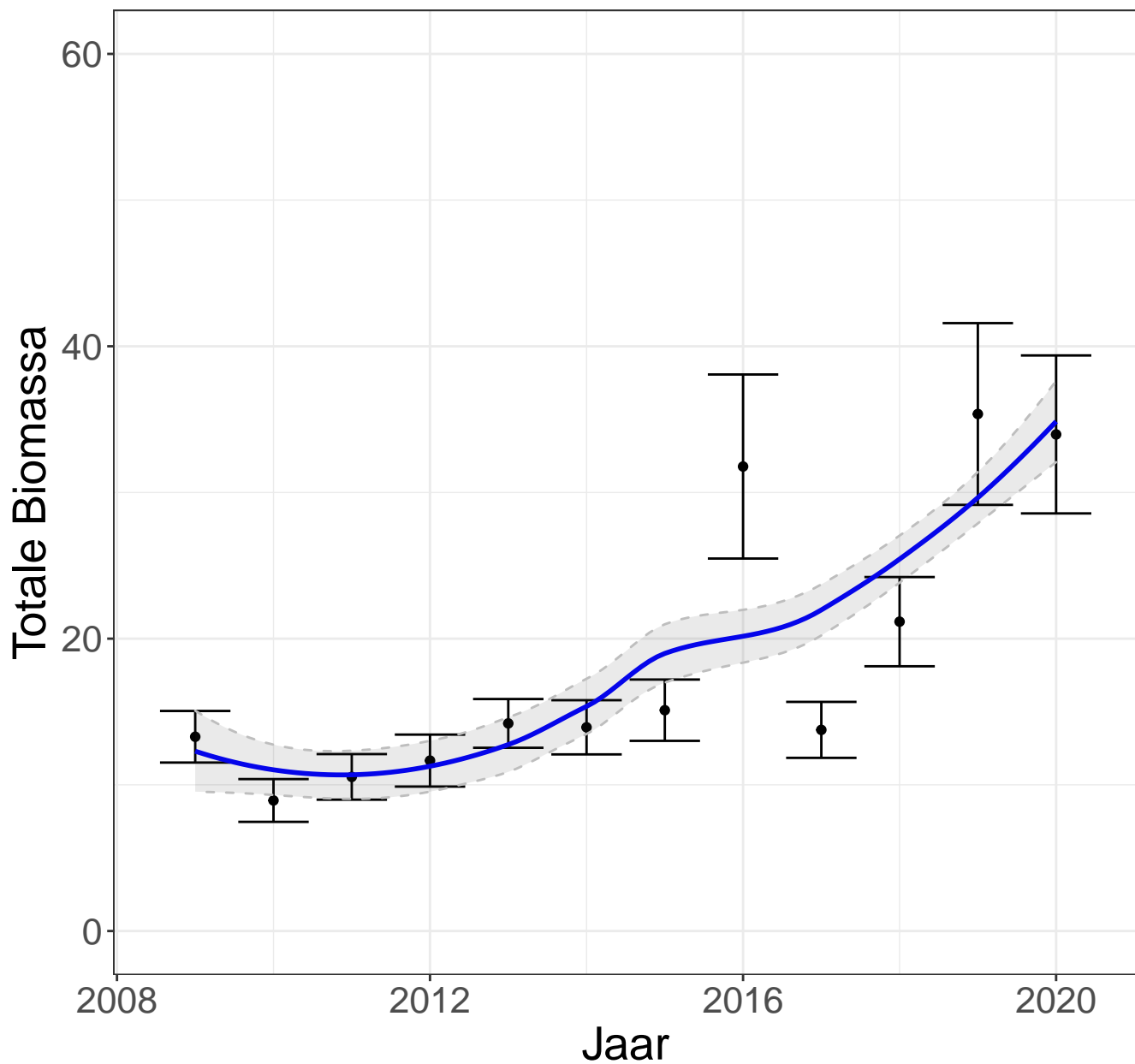
brak Laagdynamisch sublitoraal



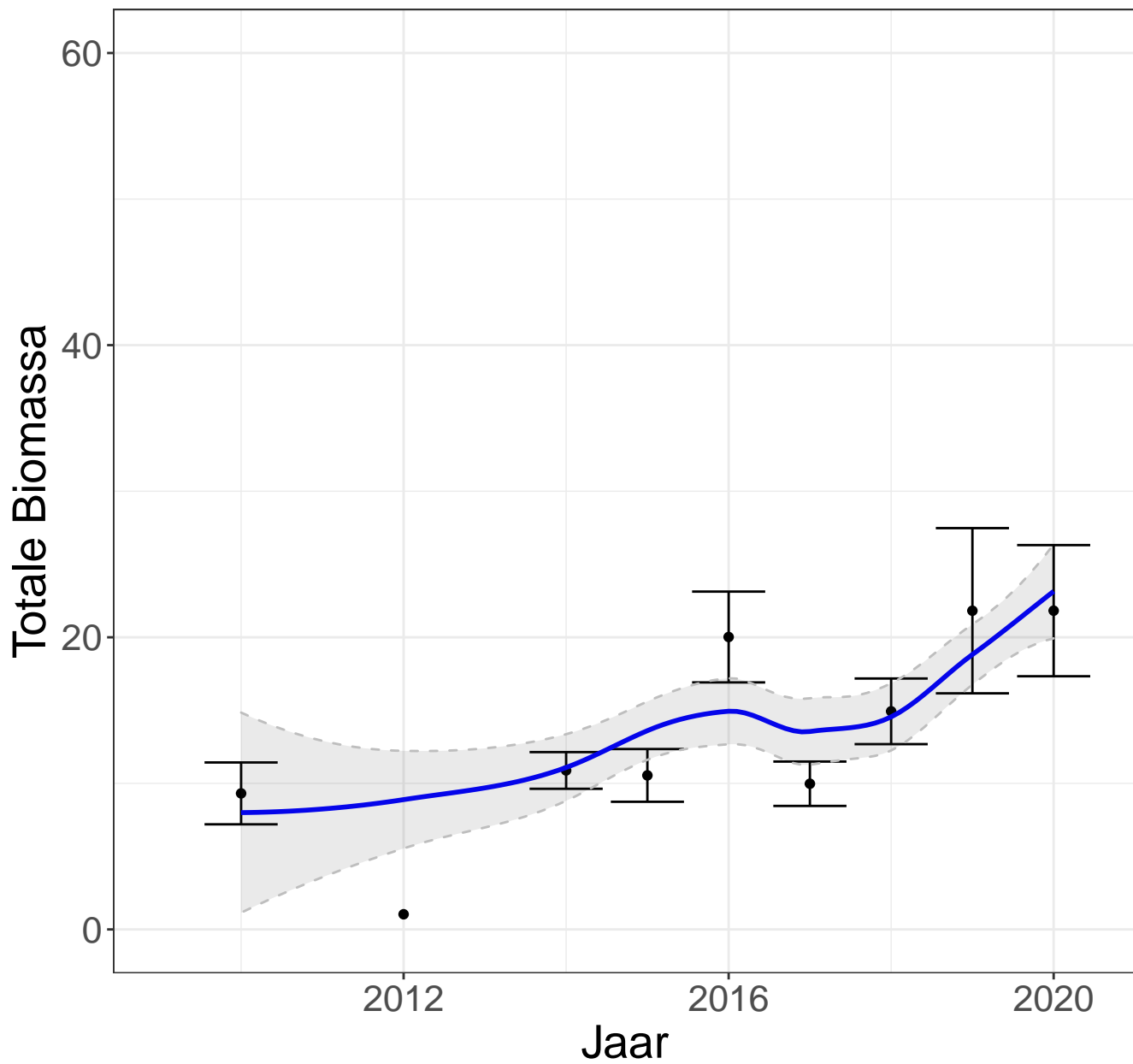
brak Laagdynamisch laaglitoraal



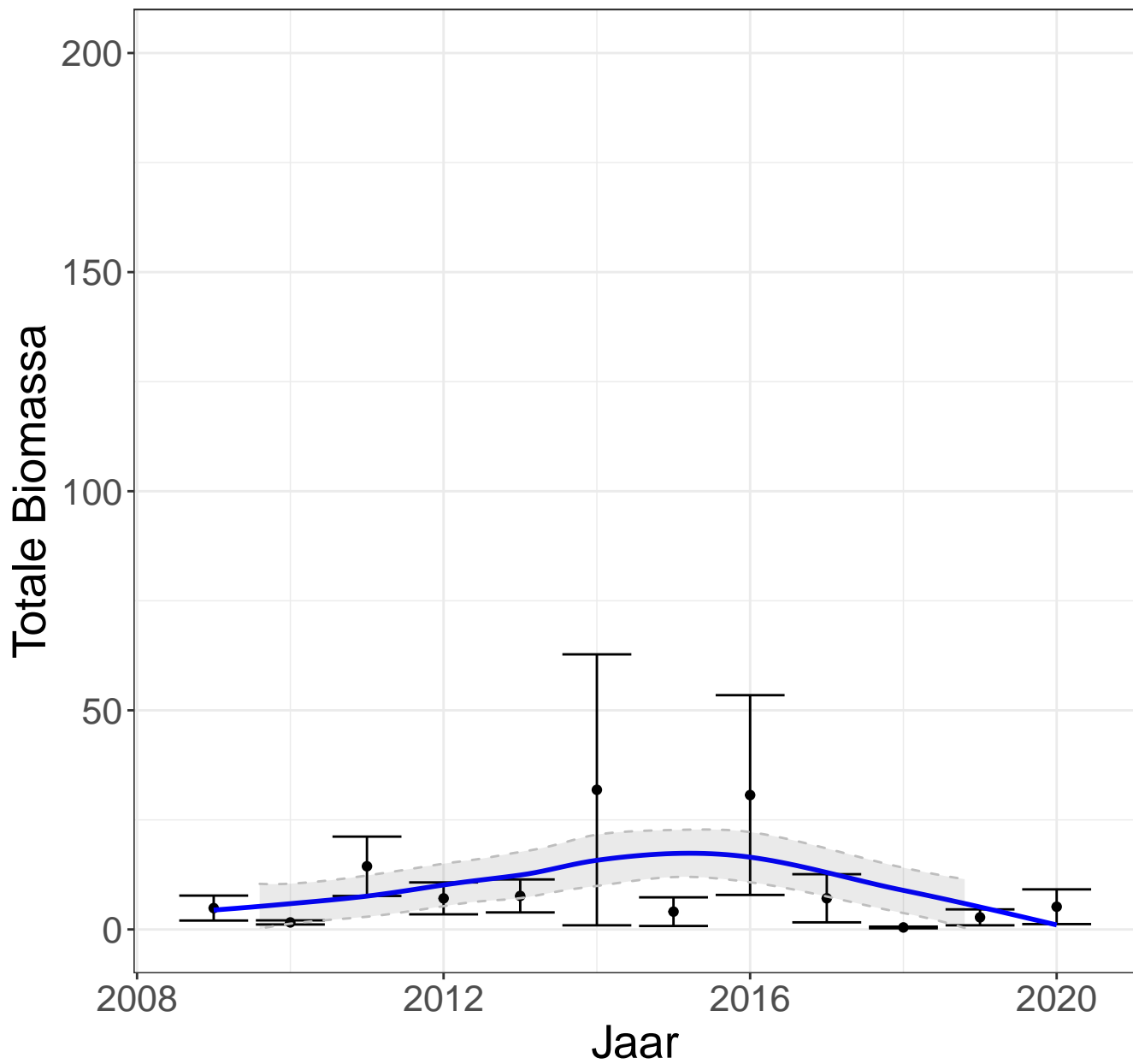
brak Laagdynamisch middenlitoraal



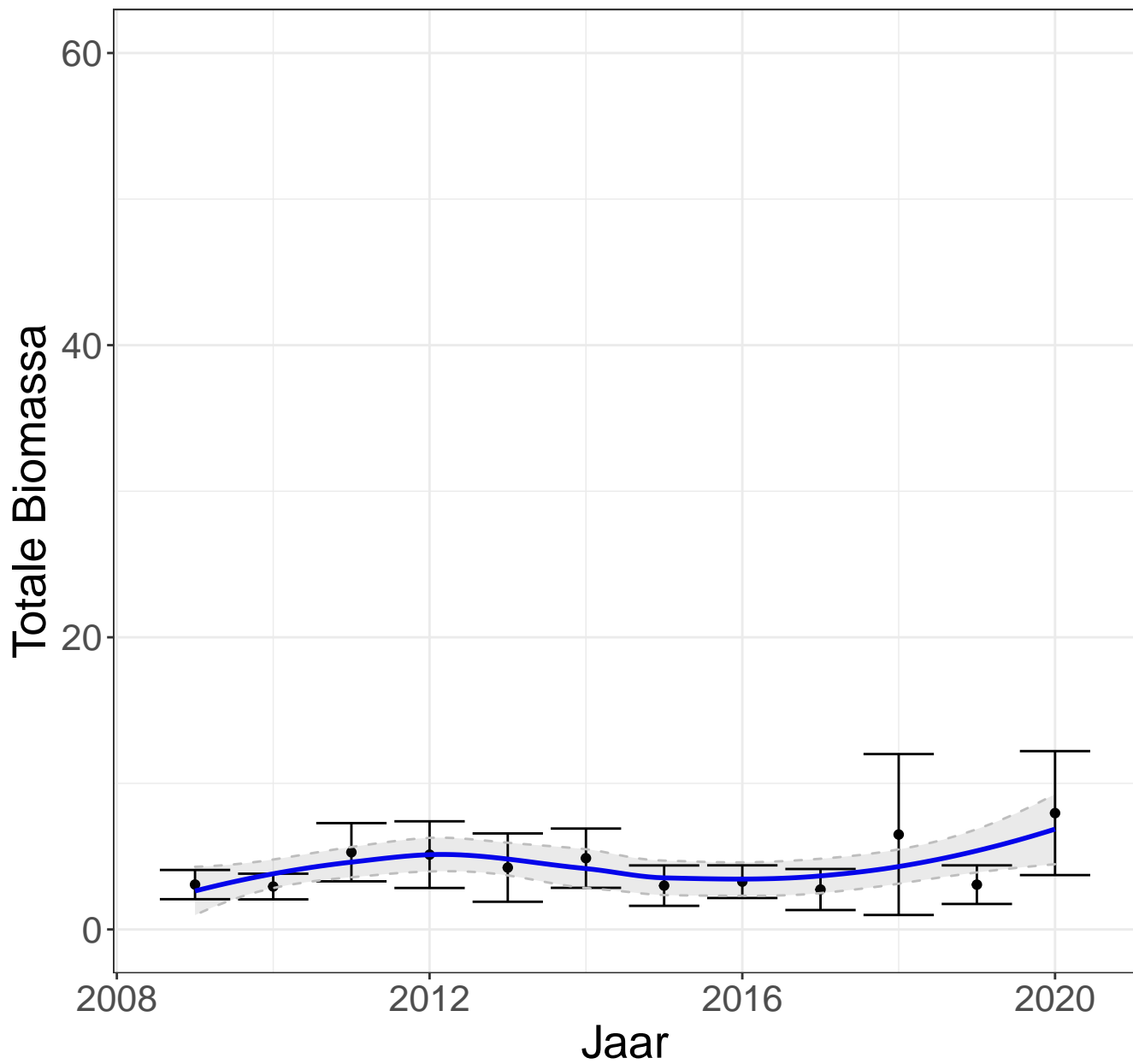
brak Laagdynamisch hooglitoraal



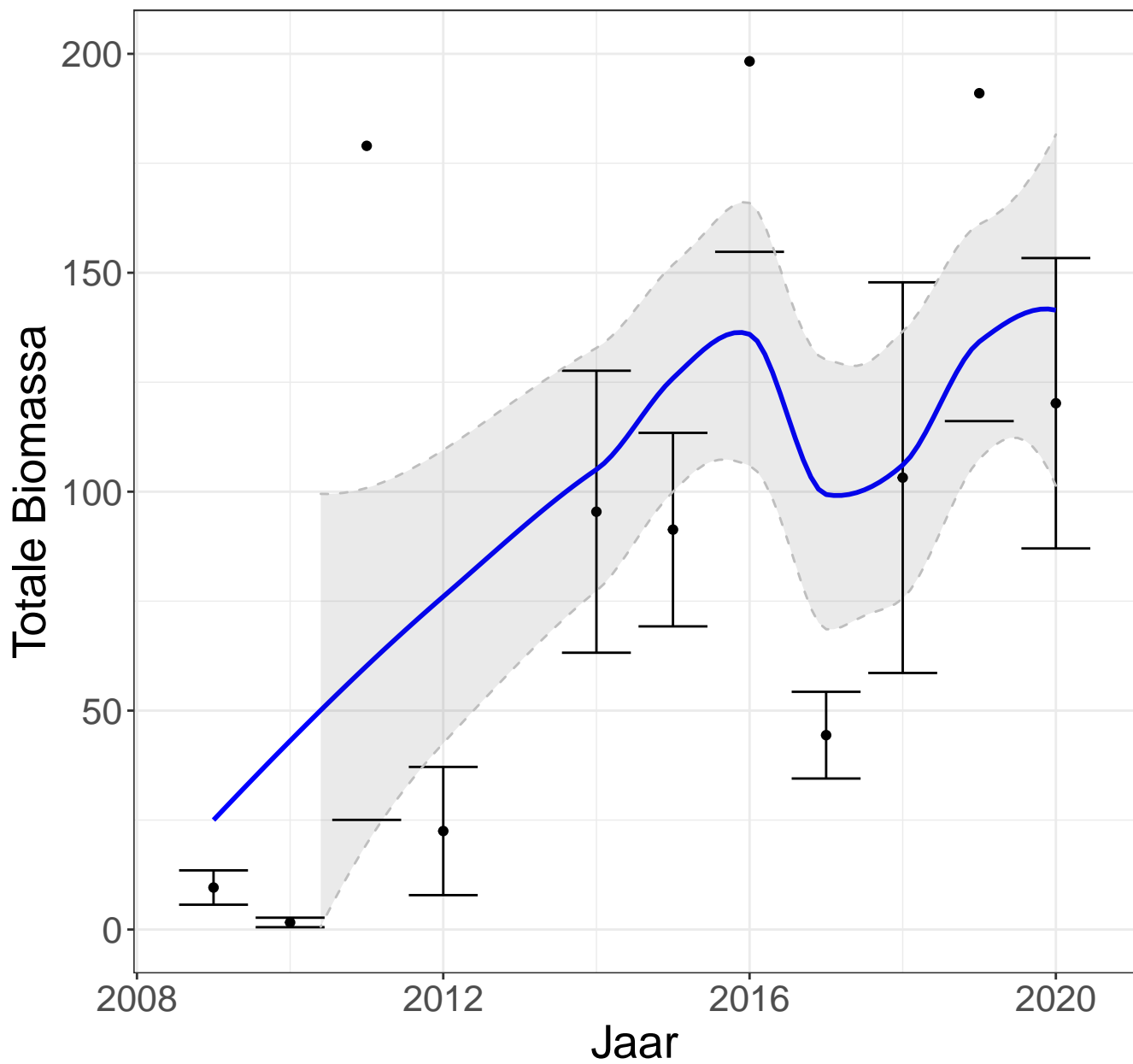
zout Hoogdynamisch sublitoraal



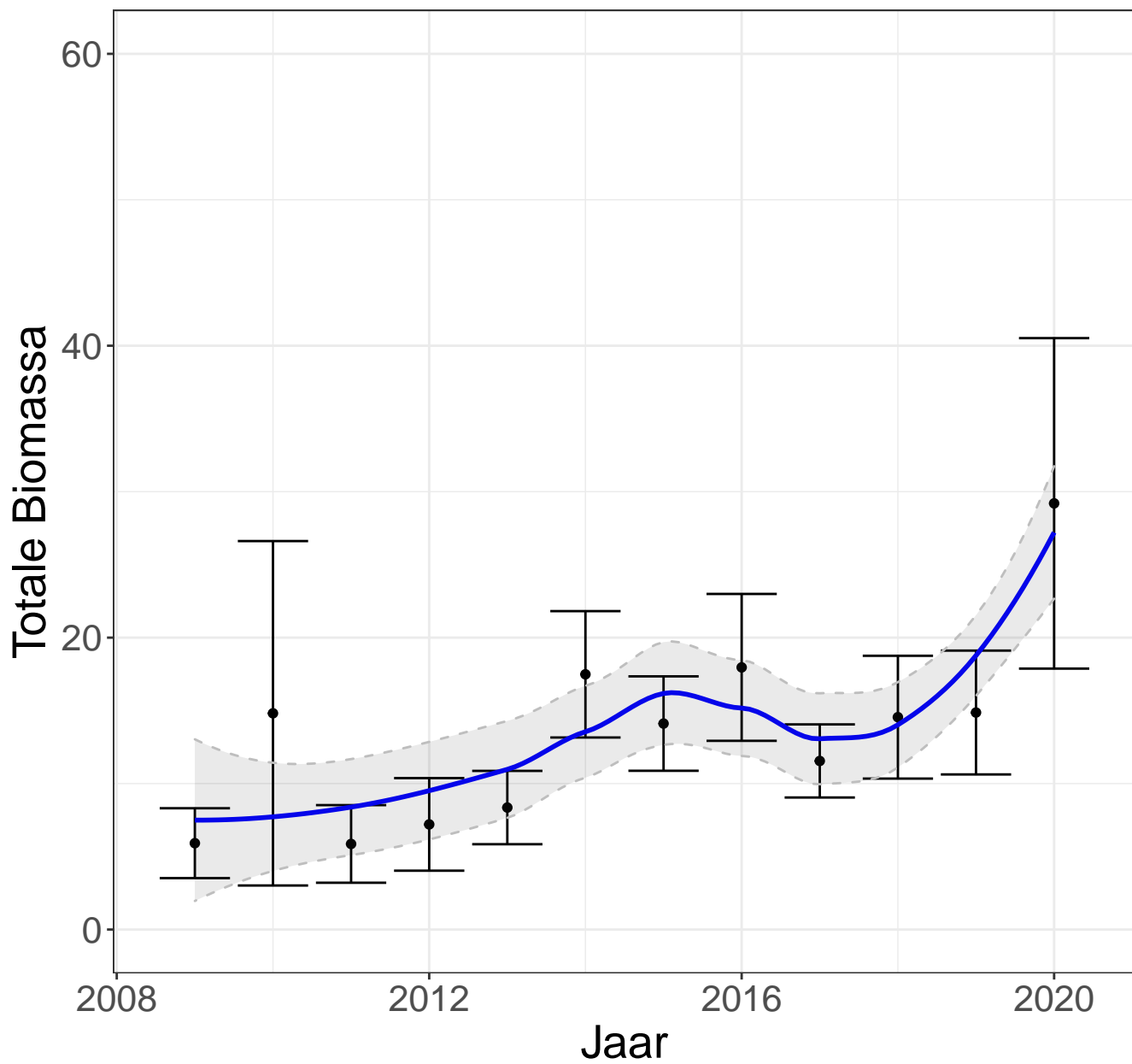
zout Hoogdynamisch litoraal



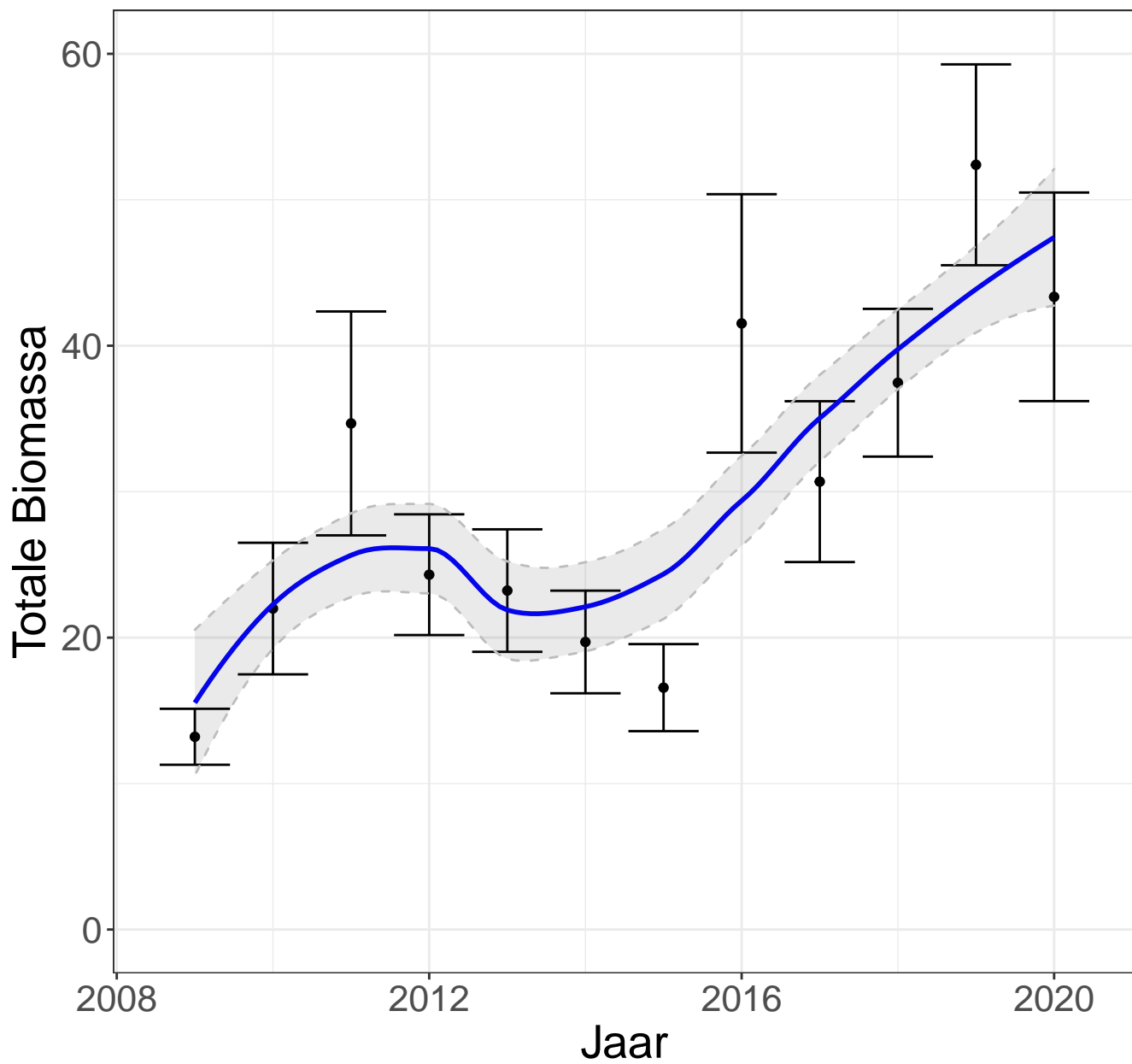
zout Laagdynamisch sublitoraal



zout Laagdynamisch laaglitoraal



zout Laagdynamisch middenlitoraal



zout Laagdynamisch hooglitoraal

