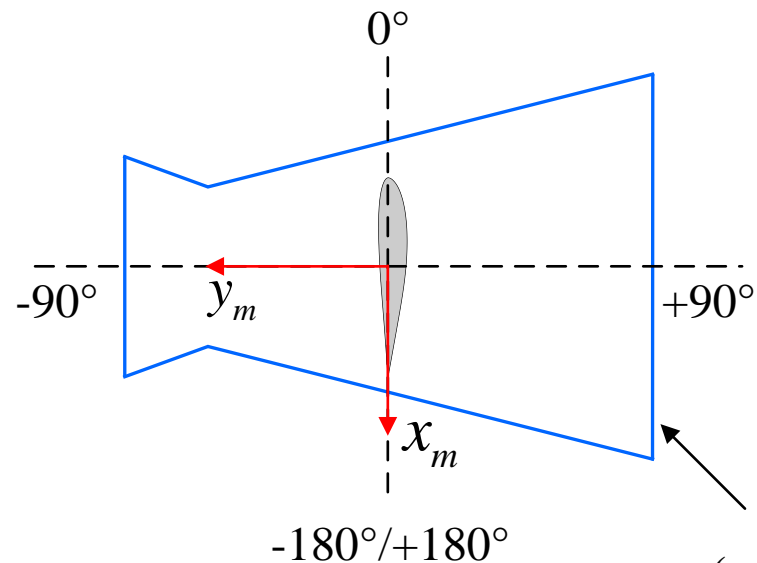


wind tunnel

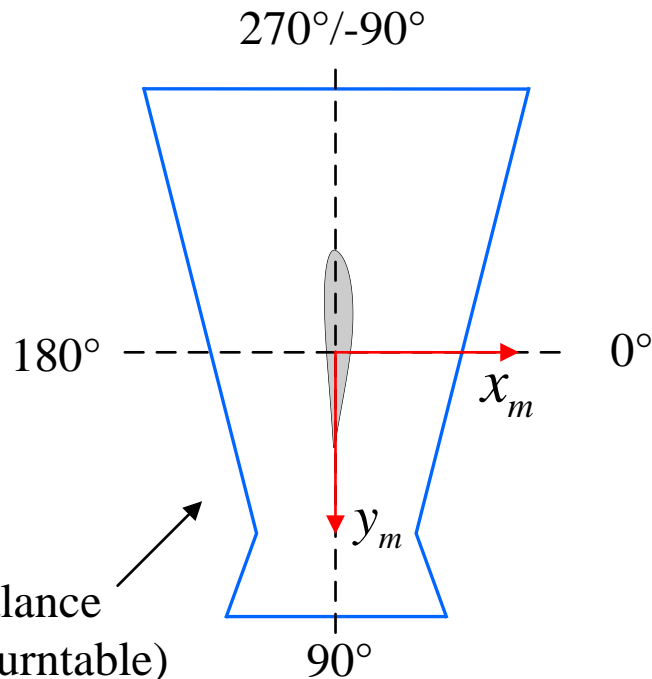


-180°/+180°

turntable angle definition  
( $\text{AOA} = \alpha_{\text{measurement}}$ )

**0%/70% throttle setup**

wind tunnel



270°/-90°

90°

turntable angle definition  
( $\text{AOA} = \alpha_{\text{measurement}} + 90^\circ$ )

**50% throttle setup**