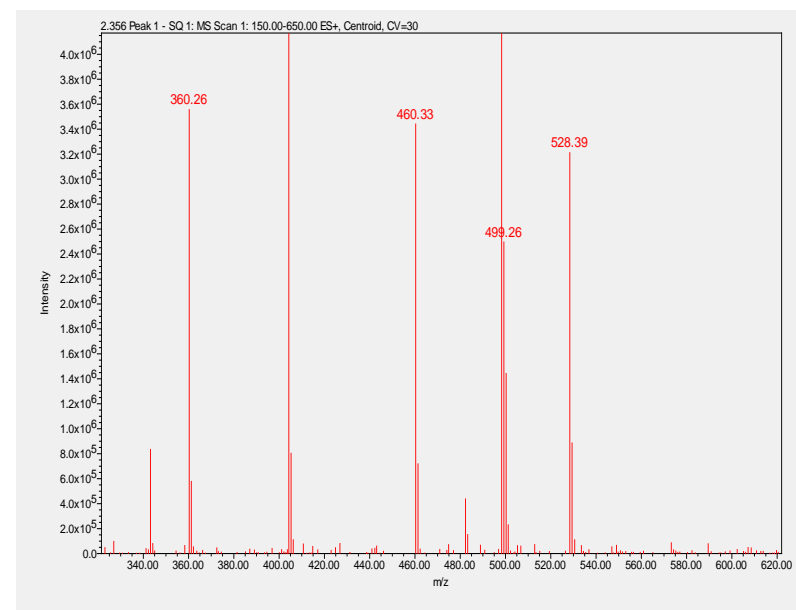
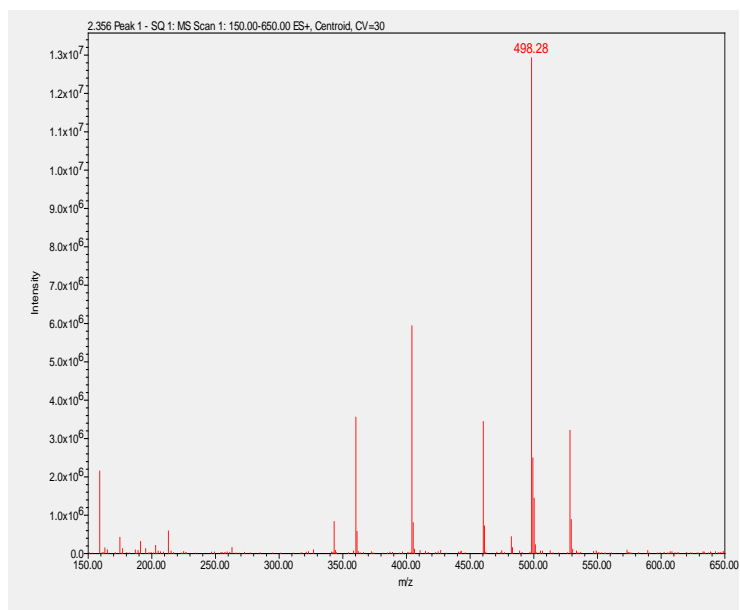


### Compound 13

**Mass:** 459.32 g/mol

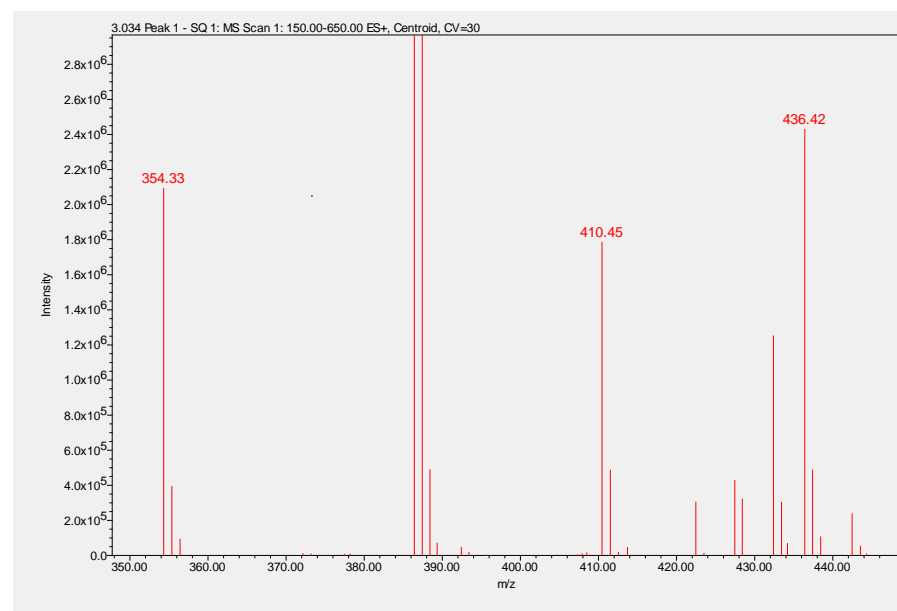
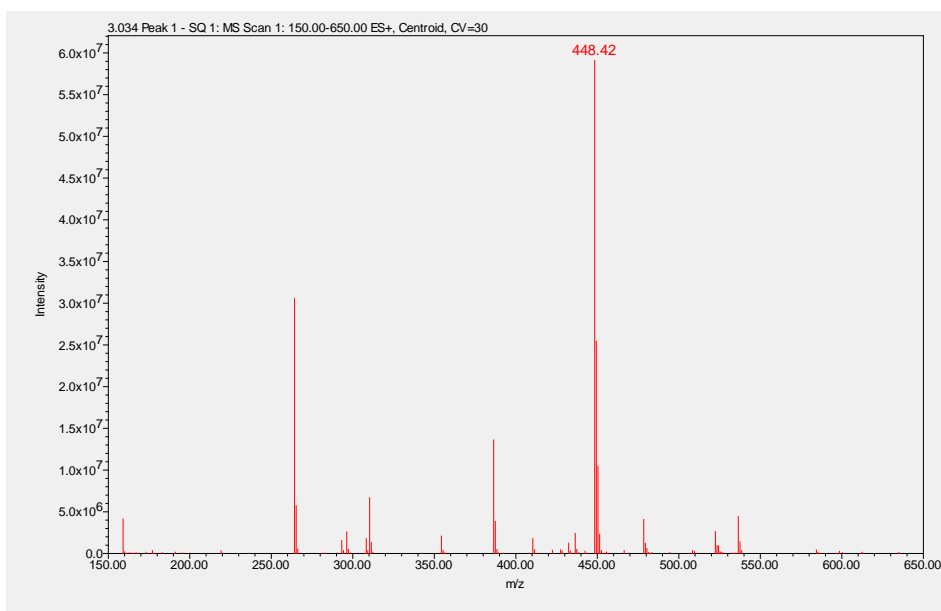
**m/z:** [M+H]= 460, [M+Na]= 482, [M+K]= 498



## **Compound 14**

**Mass:** 409.53 g/mol

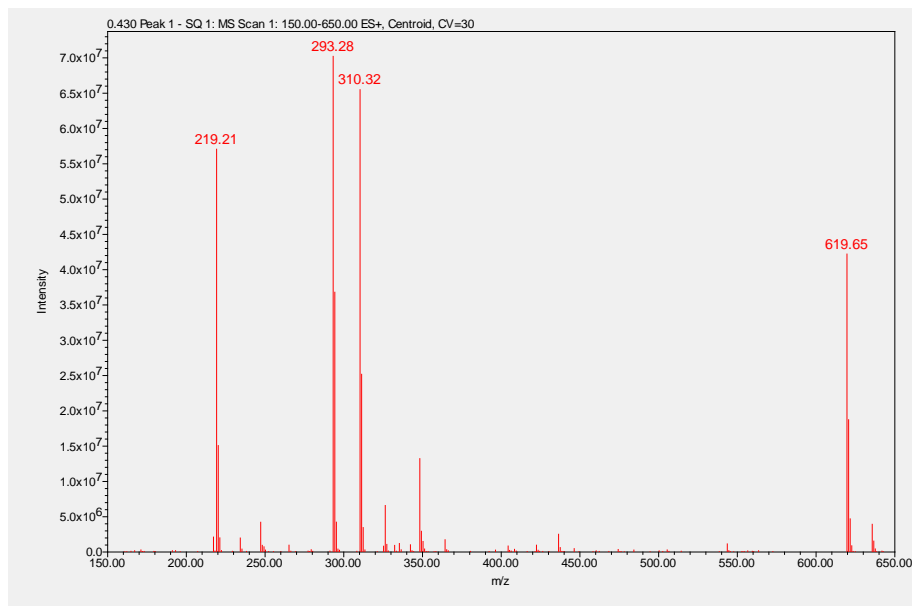
**m/z:** [M+H]= 410, [M+Na]= 432, [M+K]= 448



## Compound 15

Mass: 309.41 g/mol

$m/z$ :  $[M+H]=310$  ,  $[M+Na]=332$  ,  $[M+K]=348$



## Compound 16

Mass: 409.48 g/mol

m/z: [M+H]= 410 , [M+Na]= 432, [M+K]= 448

