

GROW YOUR BUSINESS

in Greenport Venlo



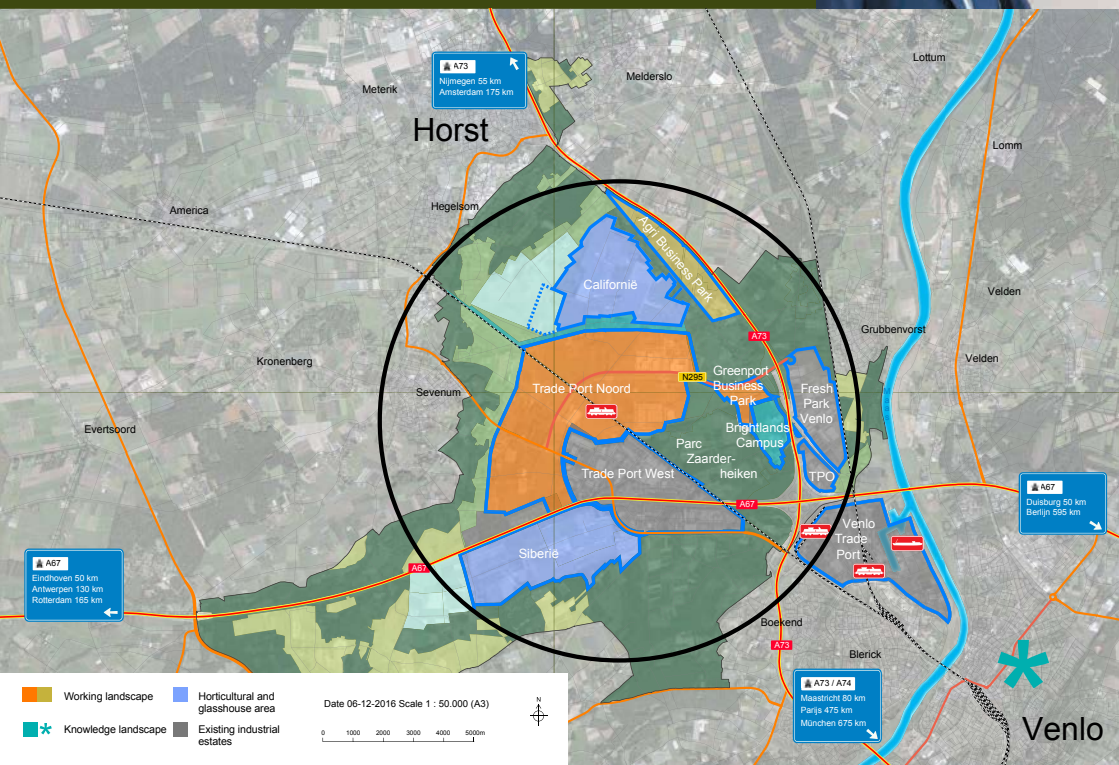
Greenport

VENLO ONTWIKKELBEDRIJF



'AS A DEVELOPMENT COMPANY WE ARE A ONE-STOP SHOP FOR COMPANIES THAT WANT TO PURCHASE A PLOT OF LAND. WE GUIDE THEM THROUGH THE ENTIRE BUILDING PROCESS, INCLUDING DEVELOPING THE IDEA INTO A BUILDING PLAN, APPLYING FOR PERMITS, PREPARING FOR BUILDING, CONSTRUCTING OF ROADS AND LAYING OUT THE LANDSCAPING OF THE PLOT.'

RUUD VAN HEUGTEN, CEO OF THE GREENPORT VENLO DEVELOPMENT COMPANY



GROW YOUR BUSINESS IN GREENPORT VENLO

AN AREA BRIMMING WITH OPPORTUNITIES

Greenport Venlo is a region of both national and international interest, that is developing strongly. In this unique area, companies from various sectors such as agriculture, food, trade and logistics are located in different industrial estates.



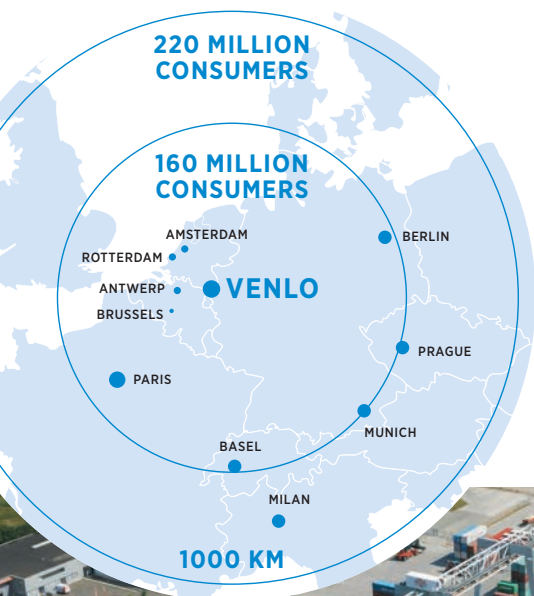
Greenport Venlo is located in an area with beautiful natural landscapes as well as a campus where scientists, students and companies are working on innovations in the field of healthy food and nutrition.

PROVIDING INPUT AND COLLABORATING

The Greenport Venlo Development Company is developing and managing the area. In recent years, many companies have successfully established themselves in Greenport Venlo. Companies value the cooperative government that has been fully committed to the economic development of the area since the 1980s.

A PLEASURE TO MEET YOU

Greenport Venlo still has plenty of space for further growth. This brochure details the location and accessibility of the area, the role of sustainability and the various business opportunities to set up branches in different industrial estates. Find out what Greenport Venlo has to offer you!



EXCELLENT LOCATION AND ACCESSIBILITY

A logistic hotspot for Europe

Greenport Venlo is located in a region with first class accessibility, including excellent road, water, rail and air connections – linking it to the European hinterland in a multitude of ways.



BY ROAD

A number of major motorways – including the A73, A74 and A67 – run through the area and ensure smooth traffic flows.

BY RAIL


Two rail terminals ensure that goods can be transported to and from Venlo by rail. A third terminal is under development in Greenport Venlo. It will be the largest inland rail terminal in the Netherlands when it becomes operational in 2020.

BY WATER

Two large barge terminals connect the region to the seaports of Rotterdam and Antwerp.

BY AIR

Many airports are located close to the region. Four airports are located within a radius of 75 kilometres around the area. That number goes up to eight airports within a radius of 180 kilometres.

An aerial photograph showing a vast, rectangular grid of solar panels installed on a flat roof. The panels are dark blue and arranged in neat rows, separated by light-colored concrete or metal walkways. The perspective is from directly above, looking down at the array.

THE HIGH IMPORTANCE OF SUSTAINABILITY

This block is part of a larger page layout. To the left of the text is a vertical blue bar. To the right is a vertical strip of an aerial photograph showing a building with a flat roof and a parking lot filled with cars. The main background of the text area is white.

TAKING NATURE AND THE LANDSCAPE INTO ACCOUNT

For the development of Greenport Venlo, we take the existing nature and landscape into account as much as possible. This ensures that the buildings are not only integrated in a sustainable way, but that the local flora and fauna also have plenty of space to thrive.

WE STRIVE FOR SUSTAINABLE ENERGY GENERATION

Greenport Venlo is encouraging established companies to generate their energy through sustainable methods, such as the use of solar panels on their roofs. The largest solar roof in the Netherlands, which comprises an impressive 28,000 solar panels, is located in Greenport Venlo. Additionally, a geothermal source in the 'Californië' horticultural area is used to heat greenhouses. Furthermore, preparations are being made for the construction of a windmill park.

ATTRACTIVE LOCATION

As a result of its sustainable ambitions, Greenport Venlo is creating a strong competitive position in the area. Currently, roughly 40% of the local energy requirements are produced and supplied in a sustainable way. In time, this could surpass even 100%!



A VARIETY OF INDUSTRIAL ESTATES

Greenport Venlo is an excellent location for companies from various sectors such as agriculture, food, trade and logistics. The area is also one of the largest horticultural areas in Europe with a hinterland that consists of tens of millions of consumers, primarily in the Netherlands and Germany.



‘THE GREENPORT VENLO DEVELOPMENT COMPANY AND THE LOCAL AUTHORITIES ARE VERY COOPERATIVE, HELPFUL IN OFFERING INPUT, TRUSTWORTHY AND QUICK IN ISSUING PERMITS.’

ERWIN COOTJANS, CEO OF NUNNER LOGISTICS

TRADE PORT NOORD

EXCELLENT CRITERIA FOR ESTABLISHING YOUR BUSINESS

A TRIPLE-A STRATEGIC LOCATION

As part of Greenport Venlo, Trade Port Noord encompasses over 400 hectares and offers entrepreneurs in the logistics, agri-food and manufacturing sectors the space they need for large-scale activities. Situated between the transport hubs of Rotterdam, Antwerp, Schiphol and the European hinterland, Trade Port Noord is a particularly favourable logistics hotspot. This location is made even more valuable by its excellent accessibility.

GREENPORT VENLO OFFERS INPUT

Plots of up to 30 hectares are available in Trade Port Noord. These plots are not pre-determined, offering you the opportunity to adapt to market developments.

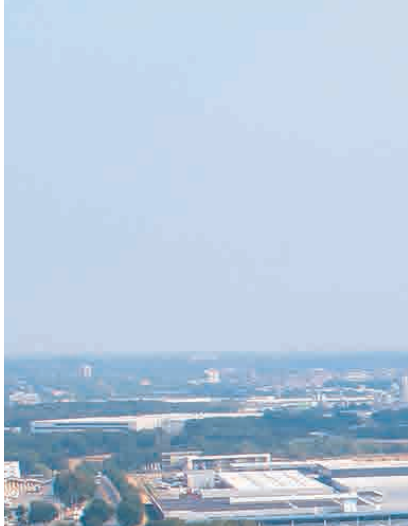


FEEL FREE TO CONTACT US

If you want to know whether Trade Port Noord is the location for you to establish your company, contact us to learn more about the possibilities.

AN ATTRACTIVE BUSINESS PARK IN A PARK-LIKE AREA

On the edges of both the Greenportlane (the N295) and the A73, companies can establish themselves in a natural environment. In this area, a complete business park – equipped with all facilities – is being developed.



GREENPORT BUSINESS PARK

Greenport Business Park borders Brightlands Campus Greenport Venlo. Companies that establish themselves here can therefore make full use of the expertise that is available on this campus for their own business developments.

A variety of small-scale plots are available at Greenport Business Park. These plots will be tailored to your needs. Please ask us about the possibilities





AN INSPIRING WORKING ENVIRONMENT

CALIFORNIË

THE AREA FOR GREENHOUSE HORTICULTURE

SPACE FOR HORTICULTURAL BUSINESSES

In the northern part of Greenport Venlo lies the spaciouly plotted area for greenhouse horticulture called Californië. This is an area where sustainable entrepreneurship, space for growth and decisiveness overlap – an area for modern and efficient horticultural businesses.

EXCELLENT LOGISTICS AND SUSTAINABILITY

The Californië greenhouse horticulture area is blessed with a favourable location close to the German market and excellent accessibility. A special feature of the area is the presence of a geothermal energy supply, which enables horticulturists to connect to a heat system that is supplied by clean geothermal energy.

ARE YOU READY FOR A HEALTHY FUTURE?

The Californië greenhouse horticulture area offers a wealth of opportunities for horticultural businesses. We would be happy to discuss the possibilities that best suit you.



AGRI BUSINESS PARK

AGRICULTURE, FOOD, AND TECHNOLOGY



AN AREA BRIMMING WITH OPPORTUNITIES

Greenport Venlo's Agri Business Park lies directly adjacent to the A73 motorway. This area, spanning 40 hectares, is perfectly suited as a branch location for companies active in the agricultural, food, and technological sectors. This is mainly because of its proximity to large concentrations of horticultural businesses and the Fresh Park Venlo trade centre as well as its favourable location for markets in the Netherlands and Germany.

INNOVATION AND FLEXIBILITY

Brightlands Campus Greenport Venlo – complete with students, researchers, and companies – is located near the Agri Business Park, which makes the area particularly attractive for innovative organizations. There is no pre-determined plot layout, enabling flexible use of the area. This means that you can get a plot that is tailored to the needs of your company!



LOOKING TO RESPOND TO MARKETS BETTER?

The Agri Business Park offers space for new ideas. Contact us to discuss the possibilities.

BRIGHTLANDS CAMPUS GREENPORT VENLO

AN EXPERIMENTAL ENVIRONMENT FOR TOMORROW'S FOOD



READY FOR THE FUTURE

Our world is facing major challenges and transitions that determine the quality of life for everyone. At Brightlands Campus Greenport Venlo, everything revolves around innovations regarding food that is healthy and safe, future farming and the biobased economy. Cross-industry collaborations also take place involving the manufacturing industry, information and communication technology, logistics or the other three Brightlands campuses in the province of Limburg.

INNOVATION IS AT THE HEART OF OUR BUSINESS

At the Brightlands Campus in Venlo, researchers and students develop and test new ideas, while start-ups and entrepreneurs look for new opportunities. The site is one big experimental environment with a range of impressive facilities: laboratories in the broadest possible sense, experimental fields for open cultivation, greenhouses for research, workshops, pilot facilities and communal areas for meeting as well as sharing information.

BECOME PART OF THE CAMPUS

At Brightlands Campus Greenport Venlo, companies can establish themselves in one of the existing buildings. Flexible areas can be rented, starting from a single workstation. In addition, plots that can be freely partitioned – on which companies can develop their own buildings – are available on the site. Contact us to learn more about the possibilities.



For more information, please refer to www.brightlands.com/brightlands-campus-greenport-venlo.





WE HOPE TO SEE YOU SOON AT GREENPORT VENLO

AN AREA THAT SHAPES ITSELF ACCORDING TO YOUR IDEAS

Greenport Venlo has so much to offer, including a range of industrial estates, beautiful landscapes, an innovative campus and an area for modern greenhouse horticulture – all of which are easily accessible. The area has a lot of variety and flexibility to offer, which means that your ideas will never be restricted and you can realize your dreams.

WE WOULD BE HAPPY TO HELP YOU ON THAT JOURNEY

The Greenport Venlo Development Company will support you from start to finish with the purchase of a plot of land. This starts at the idea phase and ends when a plot is delivered ready for use. Together we can get the best results.





Contact us

The Greenport Venlo Development Company
Sint Jansweg 20
5928 RH Venlo, The Netherlands

+31 77 850 34 50

info@greenportvenlo.nl

More information

For more information, please refer to
www.greenportvenlo.nl for the Dutch version
of our website or www.greenportvenlo.eu
for the English version