

README

Dataset of continuous human activities performed in arbitrary directions collected with a distributed radar network of five nodes

Responsible Author: Ronny Gerhard Guendel
Email: r.guendel@tudelft.nl
Created: 01-11-2021
Modified: 02-11-2021

Table of Contents

Background reading material for the used dataset:	2
Matlab read file	2
Radar setup	2
The data file contains the following information:	3
Folder description	3
File description.....	3
Description and Notification.....	3
Plot the corresponding range maps with units and label vector.....	4
The corresponding classes.....	4
Range maps example.....	5

Background reading material for the used dataset:

R. G. Guendel, M. Unterhorst, E. Gambi, F. Fioranelli and A. Yarovoy, "Continuous human activity recognition for arbitrary directions with distributed radars," *2021 IEEE Radar Conference (RadarConf21)*, 2021, pp. 1-6, doi: 10.1109/RadarConf2147009.2021.9454972.

Continuous human activity recognition for arbitrary directions with distributed radars

Ronny Gerhard Guendel*, Matteo Unterhorst†, Ennio Gambi†, Francesco Fioranelli*, Alexander Yarovoy*

*Microwave Sensing, Signals and Systems (MS3), Delft University of Technology, Delft, Netherlands

†Dipartimento di Ingegneria dell'Informazione, Università Politecnica delle Marche, Ancona, Italy

Matlab read file

The data can be read with <dataread.mlx>.

Radar setup

The radar setup is shown in Figure 1.

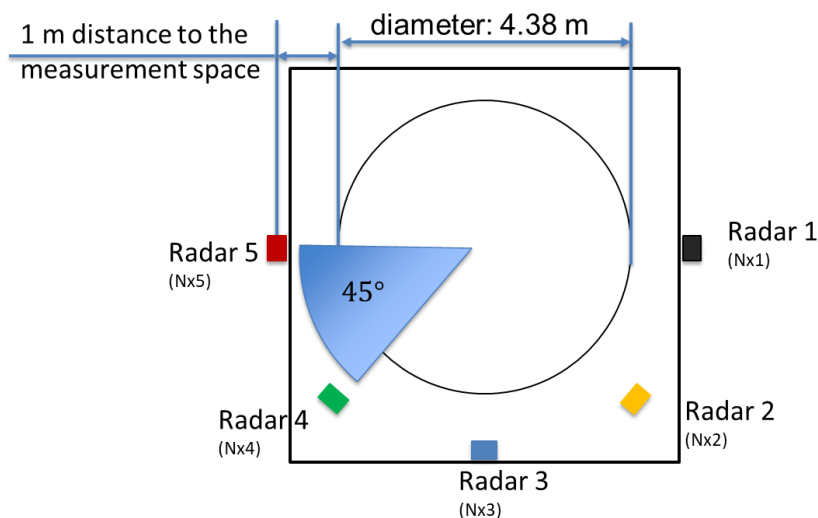


Figure 1: Distributed radar setup.

The radarsystem as shown in Figure 2 of the type PulsON P410 - Time Domain (Humatics) is a Ultra Wideband radar with the following parameters:

Center frequency:	4.3 GHz
Bandwidth:	2.2GHz
Oeration mode:	Monostatic
Pulse integration Index:	10 (1024 coherent integrations)
PRI/PRF:	8.2ms / 122Hz
Antennae:	Omnidirectional broadband antennas



Figure 2: The PulsON P410 - Time Domain (Humatics) radar.

The data file contains the following information:

Folder description

The 15 folders from 1.7z to 15.7z are assigned to the 15 participants.

File description

Example: 005_mon_WandS_1.mat

seq. 005 ... number | mon ... monostatic | WandS ... Walking and stationary | 1 ... participant 1

Description and Notification

- (a) the sequence numbers between 1 and 28 contain the training data typically and
- (b) sequence number (Example: 029_mon_Mix_1.mat) contains the test sequence with all classes performed on the locations where the training data was collected.
- (c) sequence number (Example: 030_mon_Mix_1.mat) contains the test sequence with all classes performed in random locations.
- (d) the activities can be indicated as follows with [x] as the individual participant:
 - training data of "Walking" -- '001_mon_wal_[x].mat'
 - training data of "Walking" -- '002_mon_wal_[x].mat'
 - training data of "Walking" -- '003_mon_wal_[x].mat'
 - training data of "Walking" -- '004_mon_wal_[x].mat'
 - training data of "Walking and Stationary" -- '005_mon_WandS_[x].mat'
 - training data of "Walking and Stationary" -- '006_mon_WandS_[x].mat'
 - training data of "Walking and Stationary" -- '007_mon_WandS_[x].mat'
 - training data of "Walking and Stationary" -- '008_mon_WandS_[x].mat'
 - training data of "Sitting down and Standing up" -- '009_mon_sit_[x].mat'
 - training data of "Sitting down and Standing up" -- '010_mon_sit_[x].mat'
 - training data of "Sitting down and Standing up" -- '011_mon_sit_[x].mat'
 - training data of "Sitting down and Standing up" -- '012_mon_sit_[x].mat'
 - training data of "Bending from Sitting" -- '013_mon_BfSi_[x].mat'
 - training data of "Bending from Sitting" -- '014_mon_BfSi_[x].mat'
 - training data of "Bending from Sitting" -- '015_mon_BfSi_[x].mat'
 - training data of "Bending from Sitting" -- '016_mon_BfSi_[x].mat'

- training data of "Bending from Standing" -- '017_mon_BfSt_[x].mat'
- training data of "Bending from Standing" -- '018_mon_BfSt_[x].mat'
- training data of "Bending from Standing" -- '019_mon_BfSt_[x].mat'
- training data of "Bending from Standing" -- '020_mon_BfSt_[x].mat'
- training data of "Falling while walking with Standing up from the ground" -- '021_mon_WandF_[x].mat'
- training data of "Falling while walking with Standing up from the ground" -- '022_mon_WandF_[x].mat'
- training data of "Falling while walking with Standing up from the ground" -- '023_mon_WandF_[x].mat'
- training data of "Falling while walking with Standing up from the ground" -- '024_mon_WandF_[x].mat'
- training data of "Falling from Sationary position with Standing up from the ground" -- '025_mon_FandS_[x].mat'
- training data of "Falling from Sationary position with Standing up from the ground" -- '026_mon_FandS_[x].mat'
- training data of "Falling from Sationary position with Standing up from the ground" -- '027_mon_FandS_[x].mat'
- training data of "Falling from Sationary position with Standing up from the ground" -- '028_mon_FandS_[x].mat'
- test data of "Mixed Sequence (predefined locations)" -- '029_mon_Mix_[x].mat'
- test data of "Mixed Sequence (randomly locations)" -- '030_mon_Mix_[x].mat'

Plot the corresponding range maps with units and label vector

The corresponding classes

All classes in the label vector are associated as:

1. Walking
2. Nothing (stationary)
3. Sitting down
4. Standing up from sitting
5. Bending from Sitting
6. Bending from Standing
7. Falling from Walking
8. Standing up from the ground
9. Falling from Standing

Range maps example

The range maps are with the corresponding label vector are shown in Figure 3.

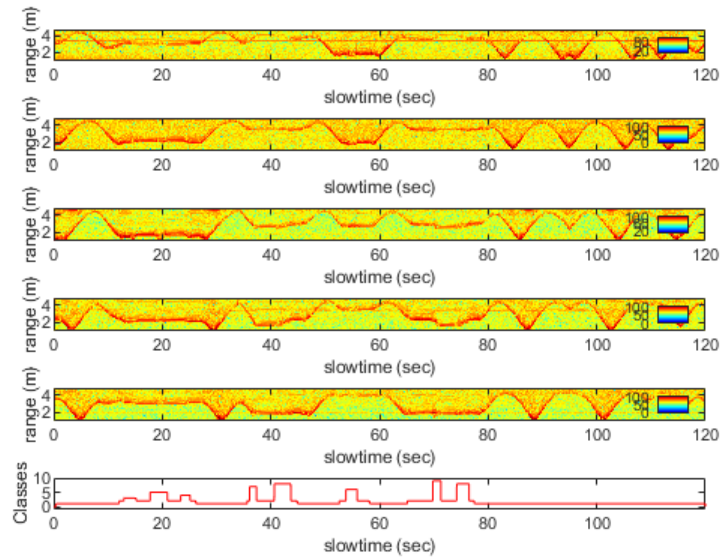


Figure 3: Example of the range maps and label vector.